

Queensland Fruit Fly Outbreak at Salisbury North

This information for the South Australian Produce Market Limited (SAPML) outlines the key information you need to know about the **Salisbury North Queensland fruit fly** outbreak and what you need to do.

Background

Due to the detection of Queensland fruit fly at Salisbury North, a new Queensland fruit fly outbreak has been declared as of 04 March 2024. This outbreak may impact your ability to send fruit fly host produce to certain markets, including interstate destinations, other parts of the Riverland and the rest of South Australia.

Restrictions now apply to growers, packers, retailers, wholesalers, and residents located within the 1.5 km Corrective Action Zone (also known as the Outbreak Area) and 15 km Controlled Movement Zone (also known as the Suspension Area). The earliest anticipated reinstatement date for the Salisbury North Queensland fruit fly outbreak is **27 May 2024**, depending on any further detections within the area.

It's important that we do all we can to keep South Australia's fruit fly free status – it protects our export market access and prevents us having to cold treat or fumigate all fruit that moves to sensitive markets.

Outbreak area and suspension area – the difference

An **outbreak area** is a 1.5 km radius area from the point of fruit fly detection where baiting and hygiene work (e.g. picking up fallen fruit to reduce the risk of fruit fly breeding) are undertaken.

A **suspension area** is a 15 km radius area from the point of Queensland fruit fly detection. You can view the maps: fruitfly.sa.gov.au

What you need to do:

All traders in the SAPML will need to follow simple steps to ensure that fruit fly host produce is kept free of fruit fly and can continue to be traded:

- Host produce from within a Controlled Movement Zone (suspension area), but not within the 1.5km **Corrective Action Zone** (outbreak area), may move within the area but must not be moved outside the yellow 15km **Controlled Movement Zone** (suspension area) unless approved by PIRSA; ensure **secure** conditions for handling, storage and transport of host produce.
- PIRSA will be present at SAPML to ensure host produce is leaving securely if produce is destined for a Q-fly sensitive market.
- Transporters and retailers will need to carry the PIRSA approval certificate if crossing the boundary – random inspections may occur.

What is secure?

Secure conditions are implemented to prevent further infestation and spread of fruit fly once treated or when being transported. Secure conditions can be maintained through using secure packaging or secure transport.

You can ensure your produce is kept secure by either;

1. **Using fly-proof packaging** – ensure all host produce is covered in fly-proof packaging. This means there are no gaps > 1.6mm in the packaging. Examples of fly-proof packaging include:
 - ✓ Fly-proof bags/mesh
 - ✓ Cardboard boxes sealed with tape (no holes)
 - ✓ Plastic bags (tied or sealed)
2. **Fully enclosed transport** – host produce can be transported securely when transiting through a fruit fly affected area. This means there are no gaps or holes > 1.6mm inside a truck or trailer (including refrigerated trailers and tautliners)
3. **Keep produce below 16°C** – if above 16°C for more than an hour physical security (within an enclosed building, cold room, enclosed vehicle, nets, rapid lift doors, air curtains). Produce above 16°C unsecured for more than an hour will require treatment or to be destroyed.

**For produce on the market square netting will be provided free of charge on a once off basis, any additional netting required will be charged out.*

Treatments

Fruit fly treatments available for produce are provided below, but please get in touch with PIRSA for specific advice relating to your circumstances:

- Cold Storage (ICA-07).
- Fumigation with Methyl Bromide (ICA-04).

Waste disposal



All green waste must be directed straight to green waste bins rather than general waste bins.

Doing this makes sure that it's properly treated and can't spread the pest. Once binned, all green waste either be directed to:

- deep burial, or
- an approved composting facility.

Check with your waste provider.

Advice for customers who have purchased fruit and vegetables from the South Australian Produce Market Limited that may then move out of the Qfly Suspension Area

Customers that have purchased host produce from SAPML need to ensure it remains sealed in fly- proof packaging during the entire journey from SAPML to their retail outlet.

Fruit that has been maintained under secure measures (as per above) can be moved out of the Produce Market. Additional certification may be required to reach some markets (e.g. interstate and the SA

Riverland). Please contact the Plant Health Market Access Team for more details.

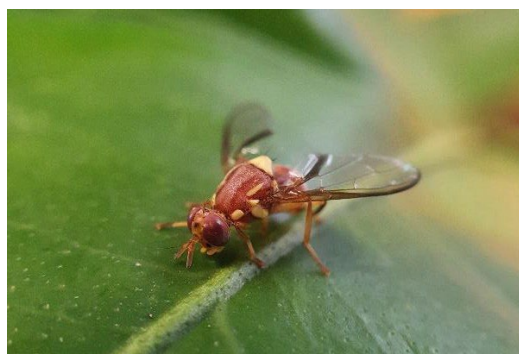
Quarantine period

These conditions will need to be maintained until at least **27th May 2024**.

Reporting suspect fruit fly



If you notice anything unusual in your produce, please seal it in an airtight container and immediately contact the Fruit Fly Hotline on 1300 666 010.



Key contacts

Inspectors onsite at SAPML

P: 0408 355 511

E: OperationsMarketAccess.AASLocal@sa.gov.au

Market access

E: PIRSA.planthealthmarketaccess@sa.gov.au

P: 1800 255 556

Industry Hotline

1800 255 556

Fruit Fly Hotline

1300 666 010

More information

Visit www.fruitfly.sa.gov.au

Map of affected area

